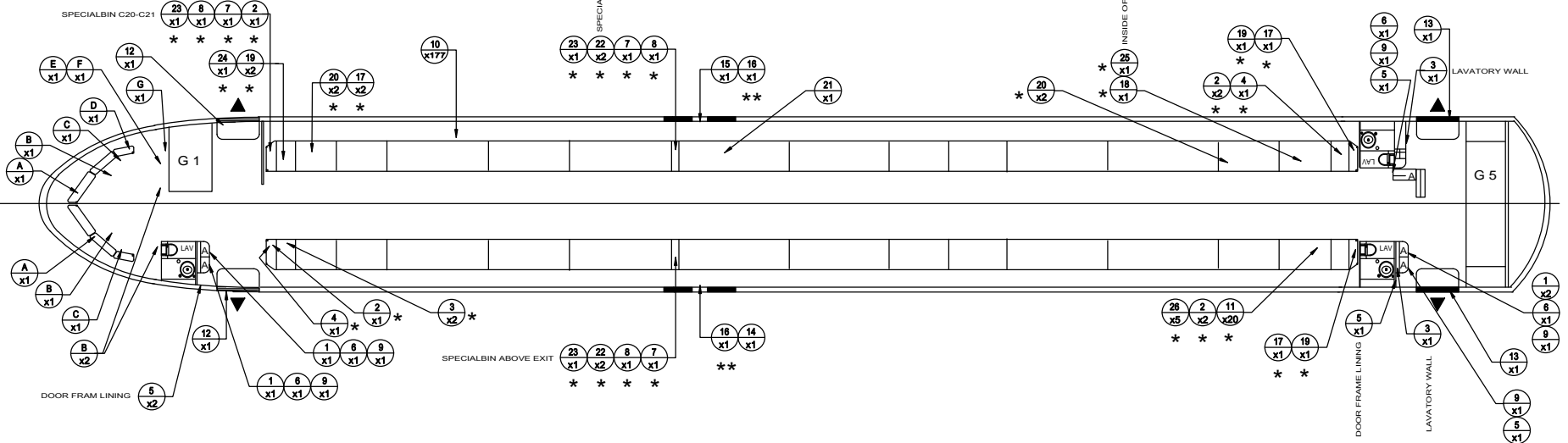


THIS DOCUMENT IS THE PROPERTY OF AIRO INDUSTRIES.CO AND IS PROVIDED ON THE EXPRESSED CONDITION THAT IT IS NOT TO BE DISCLOSED REPRODUCED IN WHOLE OR IN PART, OR USED FOR MANUFACTURE BY ANYONE OTHER THAN AIRO INDUSTRIES WITHOUT ITS WRITTEN CONSENT. AND THAT NO RIGHTS PERMITTED TO DISCLOSED OR SO USE ANY INFORMATION CONTAINED IN THIS DOCUMENT

REVISION

LTR	E.O. NO.	DATE	APPD
N/C	NEW RELEASE	03/11/2009	



5	502761-425-2269	INFANT SEAT BELT	AM SAFE	26
1	M3840ABU	DEFIBRILLATOR	LAERODAL MEDICAL	25
1	1151324-1	ELT	HONEY WELL	24
3	S-51150-6300D	DEMO LIFE VEST	SWITLIK	23
4	AFG0367463	LIFE LINE	AM SAFE	22
1	2218-N-37	WHEEL CHAIR	INNOVINT	21
4	60128-101	SEA SURVIVAL KIT	AIR CRUISERS	20
4	TF3113	PROTECTIVE LATEX GLOVES	TAM	19
1	KME-1A	EMERGENCY MEDICAL KIT	TAM	18
4	KPS	FIRST AID KIT	TAM	17
2	60592-SERIE	RESERVOIR ASSY. (EMRG EXIT L/H - R/H)	AIR CRUISERS	16
1	D31865 - SERIE	ESCAPE SLIDE EMERG. EXIT (R/H)	AIR CRUISERS	15
1	D 31865-SERIE	ESCAPE SLIDE EMERG. EXIT (L/H)	AIR CRUISERS	14
2	D 30665 - SERIE	ESCAPE SLIDE/RAFT (DOOR 2 LH / RH)	AIR CRUISERS	13
2	D 30664-SERIE	ESCAPE SLIDE/RAFT (DOOR 1 LH / RH)	AIR CRUISERS	12
20	P0723E105 SERIES	SPARE LIFE VEST	EASTERN AERO MARINE	11
177	P0723E105 SERIES	LIFE VEST FOR PASSENGER	EASTERN AERO MARINE	10
5	P0723E105PC	LIFE VEST CABIN CREW	EASTERN AERO MARINE	9
3	502748-433-2269	DEMO SEAT BELT	AM - SAFE	8
3	289-1001	DEMO PACK - 1 O2 MASK	SCOTT	7
4	995000	MANUAL RELEASE TOOL	PURITAN	6
5	TF1787	FLASH LIGHT	TAM	5
2	A12SA	MEGAPHONE	FEDERAL SIGNAL	4
4	802300-14	SMOKE HOOD	SCOTT	3
4	E28180-10	SMOKE HOOD STOWAGE BOX	DRAEGER	3
6	9700-C1A-BF23AN	OXYGEN KIT 1 O2 - BOTTLE (11 cuft) 1 O2 - MASK (CREW)	SCOTT	2
4	BA21741SR-2	FIRE EXTINGUISHER 1.2 kg (HALON 1211)	FIRST TECHNOLOGY FIRE & SAFETY	1
	BA50102-3	BRACKET	FIRST TECHNOLOGY FIRE & SAFETY	1
QTY	PART NUMBER	PASSENGER CABIN EMERG. EQUIPMENT	MANUFACTURER	POS.

QTY	PART NUMBER	FLIGHT DECK EMERGENCY EQUIPMENT	MANUFACTURER	POS.
2	TF1787	FLASH LIGHT	TAM	A
4	P0723E105PC	FLIGHT CREW LIFE VEST	EASTERN AERO MARINE	B
2	208724-0	ESCAPE ROPE	AERAZUR	C
1	H1 - 10AIR	FIRE EXTINGUISHER	GENERAL INCENDIE	D
1	680-0040-000	CRASH AXE	SERMAT S.A.	E
1	FKK8-35KL	GLOVES FIREPROOF	BENNETT	F
1	E28180-10	SMOKE HOOD STOWAGE BOX	DRAEGER	G
1	802300-14	SMOKE HOOD	SCOTT	G
QTY	PART NUMBER	FLIGHT DECK EMERGENCY EQUIPMENT	MANUFACTURER	POS.

POSITION (POS.)
 QUANTITY (QTY)
 * STWED IN THE OVERHEAD STOWAGE COMP.
 ** INSTALLED INSIDE OF AFT CARGO COMP.

NOTE:

- ONE LIFE JACKET IS LOCATED UNDER EACH PASSENGER SEAT.
- INSTALL ALL IDENTIFICATION/LOCATING PLACARDS ADJACENT TO THE LOCATIONS OF THE EMERGENCY EQUIPMENT IN A PROMINENT AND VISIBLE LOCATION.
- THE EMERGENCY EQUIPMENT LAYOUT IS TO BE CARRIED OUT IN CONJUNCTION WITH 177 PAX SEAT LAYOUT ACCORDANCE WITH DRAWING 009-21602
- ONE SEAT BELT IS LOCATED AT EACH PASSENGER SEAT
- LOCATION OF FIRST AID KIT AND FIRE EXTINGUISHERS TO BE IDENTIFIED AND VISIBLE TO OCCUPANTS
- INSTALL EMERGENCY EQUIPMENT PER AIRCRAFT MAINTANACE MANUAL

UNLESS OTHERWISE SPECIFIED DIMENSIONS ARE IN INCHES .xx = + / - .030 .xxx = + / - .010 ANGLES = + / - 1/2	DRAWN ROSS SALEM	DATE 03/11/2009	AIRO INDUSTRIES, CO 527 JESSIE STREET SAN FERNANDO, CA 91340 EMERGENCY EQUIPMENT LAYOUT 177 PAX AIRBUS A320
	CHECK	DATE 03/11/2009	
	ENGRG	DATE 03/11/2009	
	MFG ENGRG	DATE 03/11/2009	
BREAK ALL SHARP EDGES MARK PART PER ML-STD-130	CONFIG, CNTL	DATE 03/11/2009	SIZE A
MACHINED SURFACE FINISHES 126 MAX.	IN LIEU OF	DWG NO. 009-21602-1	
			REV. N/C
			SCALE NONE
			SHEET 1 OF 1

4

3

2

1

C

C

B

B

A

A

4

3

2

1